

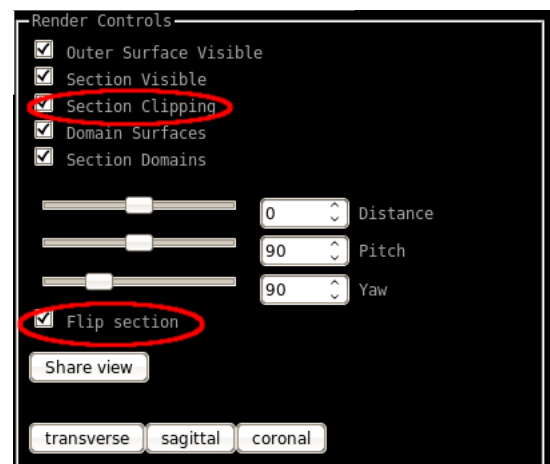
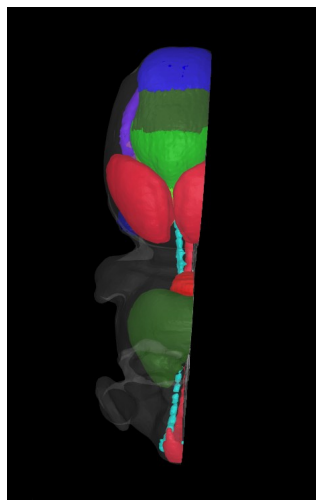
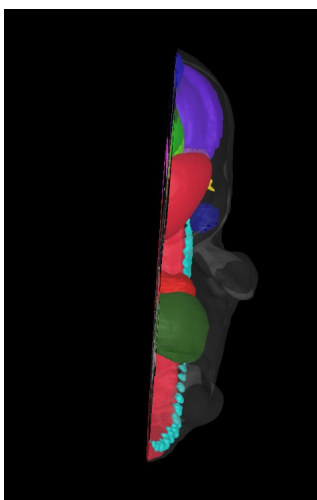
## Guide to viewing the HuDSeN interactive CS19 model

By default the CS19 model loads up with 3D painted anatomical domains and 2D section views shown within the outer surface of the embryo.



The anatomical domains are as follows: heart - red; liver - dark green; eye - dark blue; otic vesicle (ear) - yellow; dorsal root ganglia - cyan. The central nervous system has been subdivided as follows: pallium - red, subpallium - orange, hypothalamus - light brown, prosomere 3 - bright green, prosomere 2 - green, prosomere 1 - dark green; mesencephalon - blue; isthmus - dark purple, metencephalon (rhombomeres 1-6) - purples/pinks; myelencephalon (rhombomeres 7-11) - magenta; spinal cord - maroon.

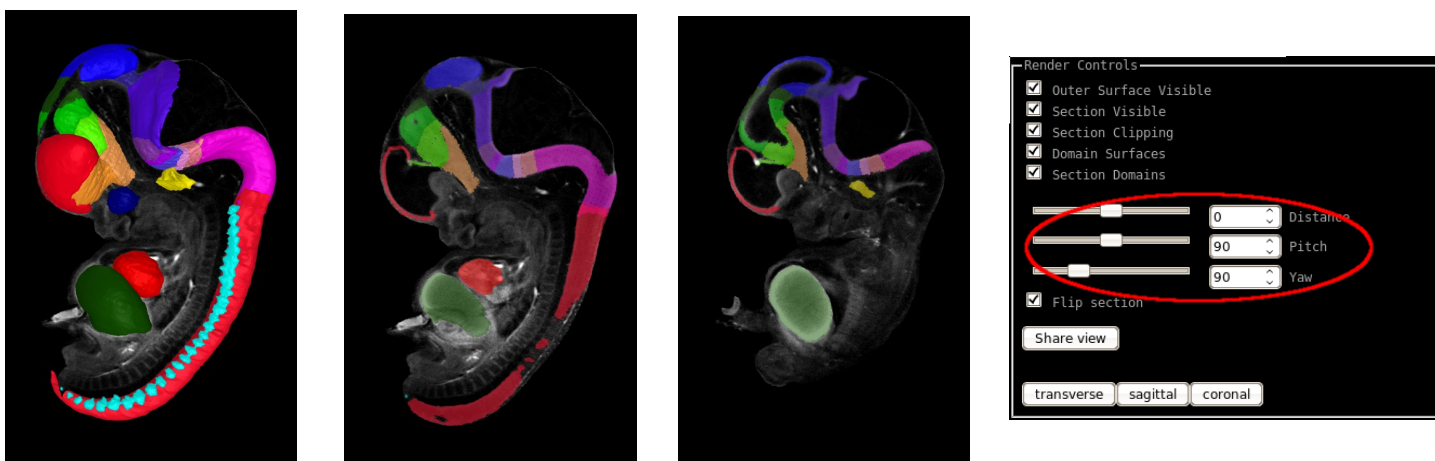
Click and drag the mouse to move the model. The default view has the area behind the section clipped. This can be flipped or turned off altogether using the Render Controls panel.



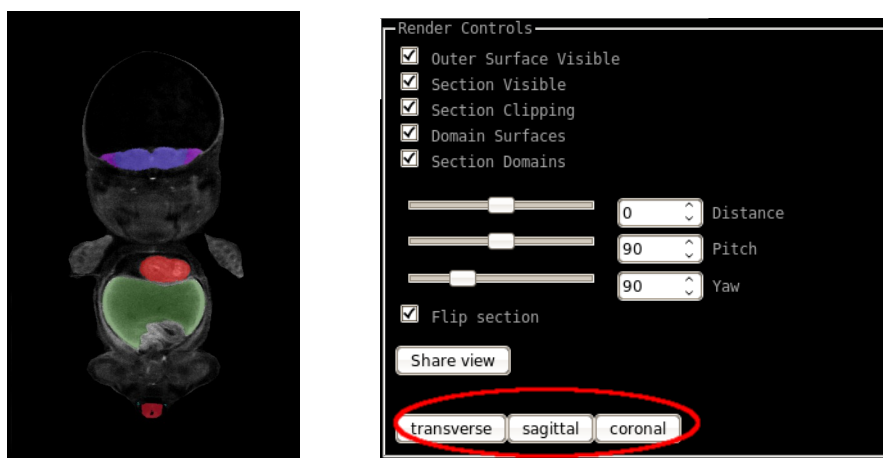
The section and outer surface can also be made invisible.



When viewing the 2D section the 3D domain surfaces can be switched on or off.



The section can be moved through the model using the distance slider, and the angle of the 2D section can be changed using the Pitch and Yaw sliders. The default view is the sagittal plane - this can be changed by selecting the transverse or coronal buttons at the bottom of the panel.



For any questions about the HuDSeN 3D models, or to give feedback, please contact [hudsen@ncl.ac.uk](mailto:hudsen@ncl.ac.uk)