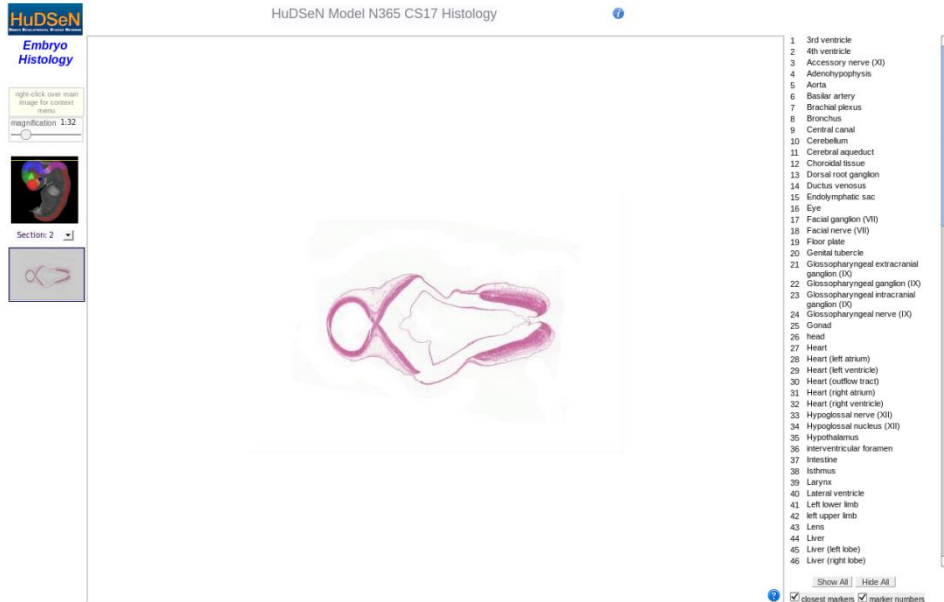


# Guide to viewing the HuDSeN high resolution sections in the eHistology Viewer

The viewer interface:

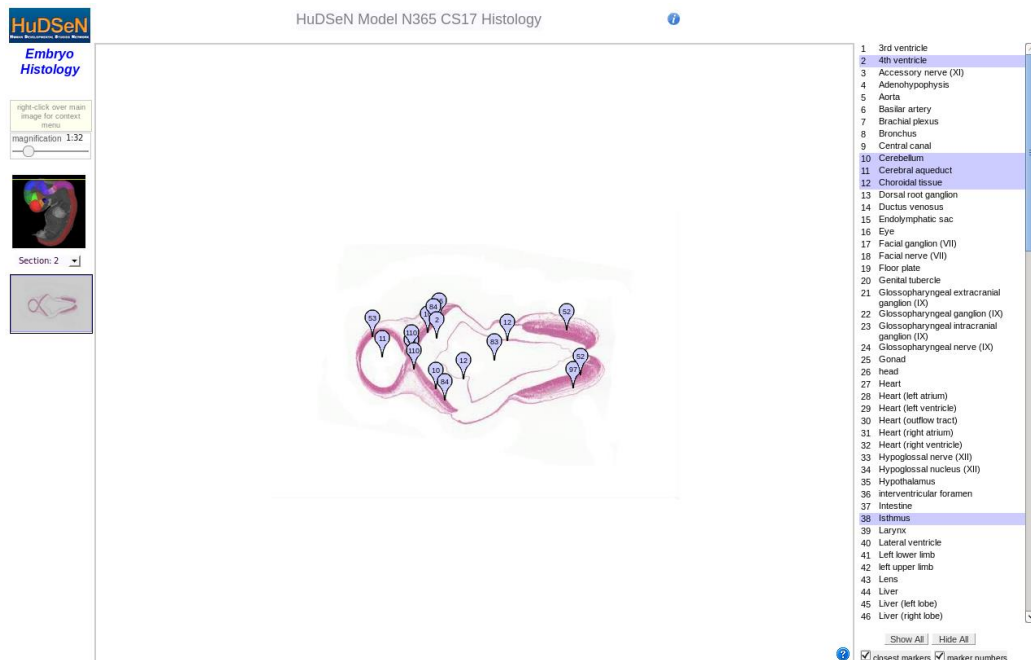


Controls

Image

Anatomy terms

The list of anatomy terms on the right hand side contains all the terms for the set of sections. To show the terms for the section of interest click the “show All” button. The terms will then be highlighted in the list and displayed as flags on the section:



To magnify the image use the slider in the top left hand corner. The section can then be moved by clicking and dragging the image or by using the grey navigation box below the embryo thumbnail image. Hovering over a flag will display the label and also highlight the term in the anatomy list in pink:



To change the section, use the drop down button on the left hand side. The line on the embryo thumbnail will change to show the position of the new section.



For any questions about the eHistology viewer, or to give feedback, please contact [HDBR@ncl.ac.uk](mailto:HDBR@ncl.ac.uk)